

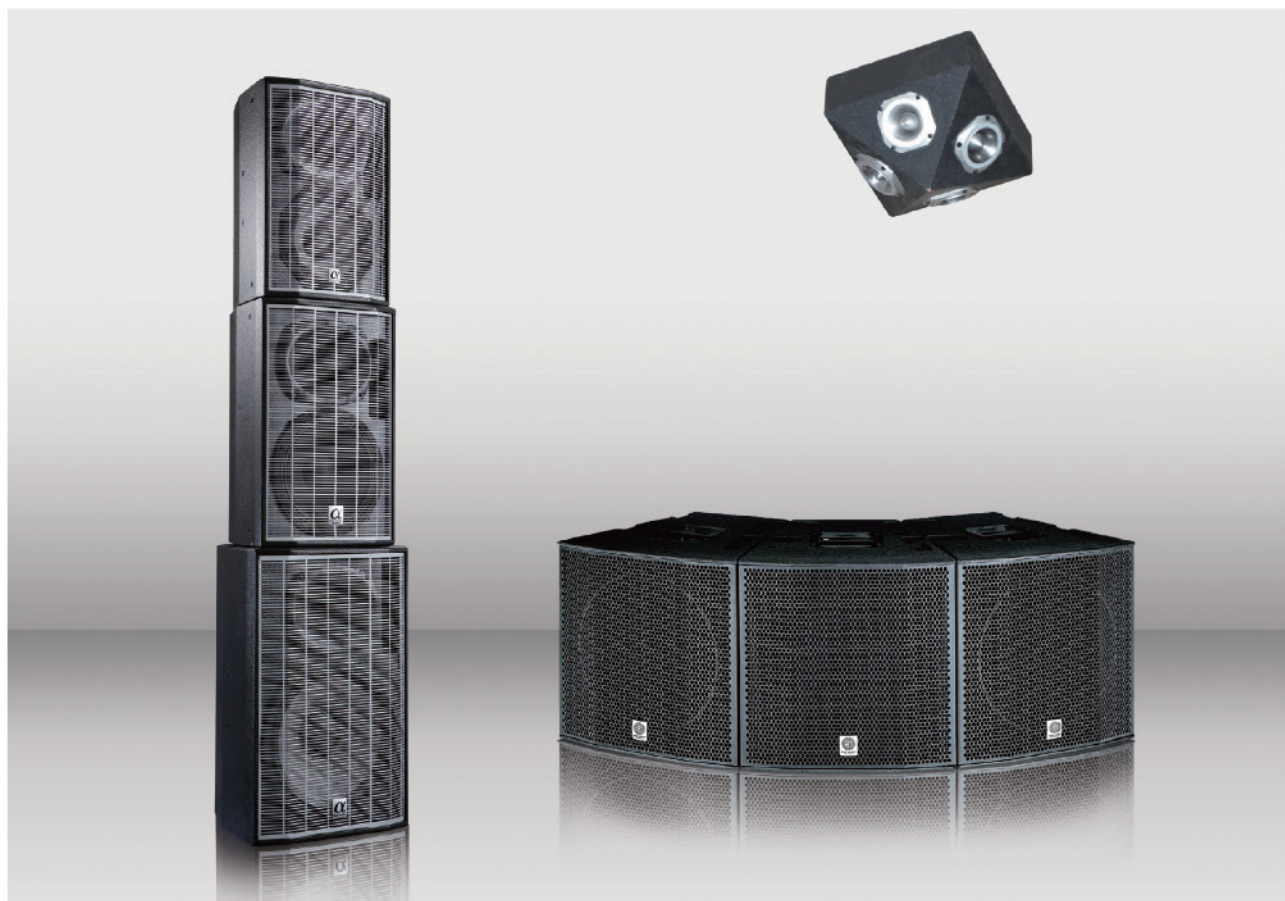


# DS Series

Entertainment permanent installation Loudspeaker System  
娛樂固定安裝系統

活力本色 炫動HI時尚

Energetic, High and Fashionable



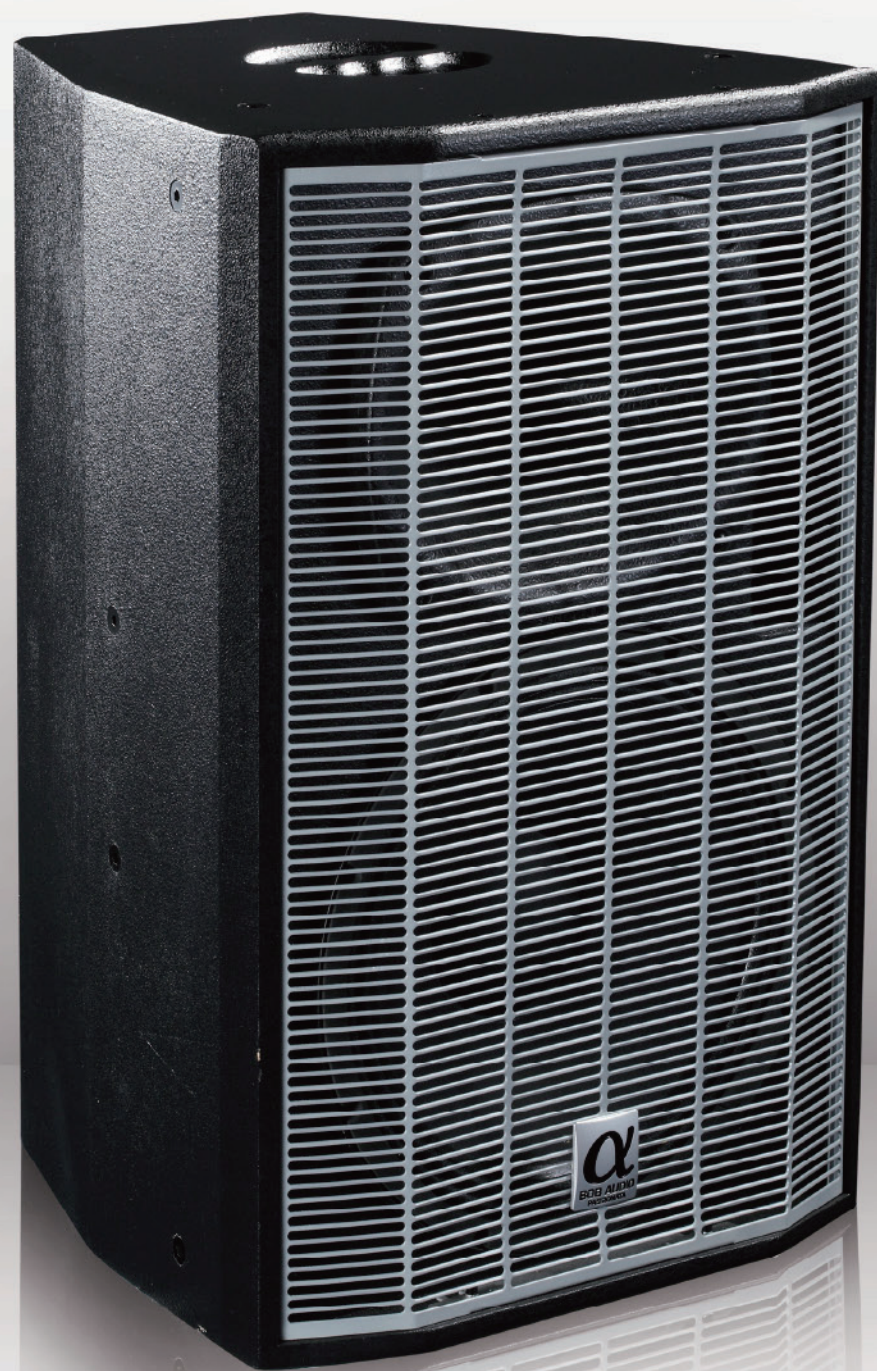
技精于博 專注于聲



THE BEST OF BEST.....

- DS系列是一款專門為酒吧度身定制的揚聲器系統。它不論聲音或者外型都能給人一種強烈震撼。
- DS系列基本上是由DS1、DS2、DS3、DS4、DS5組成一個系統，其中的DS5更是採用了組合式設計，各種吊挂靈活方便地組合。專利技術的C.T.L相位塞加同軸中/高頻揚聲器單元耦合到一個號筒上，確保了整個中高频段在最大聲壓級情況下發出純淨、自然、水晶般清澈透明的音色。對稱式和可以旋轉設計的號筒可以產生對稱的波束覆蓋，從而實現各種現場區域的理想涵蓋。為了保證低頻有足夠能量，和BS系列的低頻音箱配合使用，為場所提供強而有力的衝擊力，產生激蕩轟鳴、震撼人心的節奏和效果。各個型號的音箱彼此之間可以方便地組成各種功能強大的揚聲器系統陣列。
- 這套系統以高超的技術手段、完美處理所有酒吧舞廳環境的聲學和技術。使你處身于酒吧舞廳的任何角落都被它完美的表現所深深吸引。
- DS series is a specialized made for bars. Whatever its sound and shape will rock you so much!
- DS series is a system that making up of DS1, DS2, DS3, DS4 and DS5, DS5 is modular design that can be suspended flexible. Patent technology C.T.L phase plug and coaxial MF/HF loudspeaker unit couple in the same horn to make sure the whole mid-high frequency outputs clean, nature and crystal like transparent sound under maximum SPL. Symmetric and rotatable horn makes symmetric beam covering in order to achieve the ideal covering for various places. In order to ensure enough energy for low-frequency, it uses with BS series subwoofer to provide powerful impact, rolling rhythm and stocking effects. Each model can be use flexible with each other to assemble as kinds of powerful speaker system or array.
- This system brings a perfect solution for all bars or nightclubs' environment with lofty techniques. It makes you attracted deeply by its perfect performance in any corner of bars and clubs.

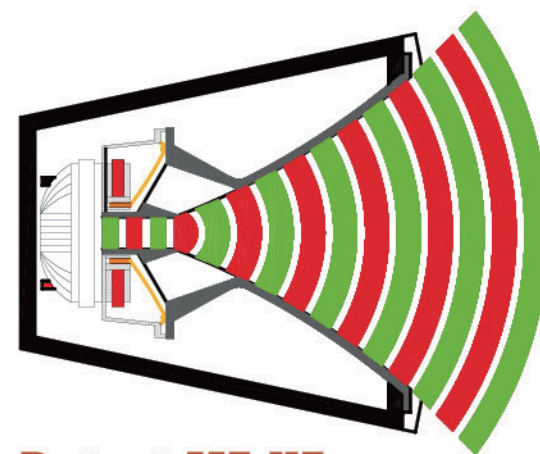




## Enclosure Design 箱體設計

酒吧，俱樂部集中了一部分新潮流的消費群體，這部分人對符合潮流的產品特別敏感，DS系列音箱一改傳統音箱沉悶的外形設計，採用緊湊菱形對稱多邊形設計，外罩亮銀色長條形鋼網保護。令人有眼前一亮的感覺。優質的芬蘭全樺木多層膠合板建造箱體，符合聲學設計要求特別定制的樺木膠合板令到DS系列音箱堅固結實的同時具有良好的聲學特性。

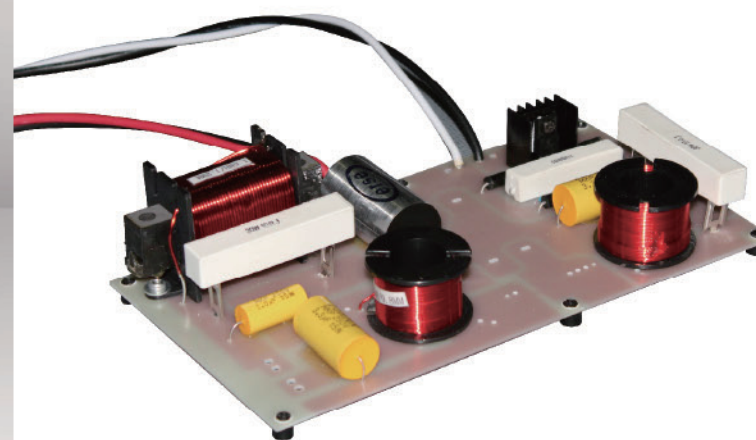
Fashionable people like to play in bars and clubs, these people are very sensitive to trendy products. DS series refused to use boring traditional enclosure, its compact diamond symmetric polygon design and shining silver long strip stainless steel grille makes everyone an impression. High quality Finland multi-layer birch plywood, this kind of birch plywood is specially made to meet acoustical design that leading DS series' enclosure solid and good acoustical character.



## Patent MF-HF Coaxial Array Technology 專利中高頻同軸陣列技術

使音箱覆蓋整個區域，實現聲場均勻是場所設計必需考慮的問題，為了保證實現水平和垂直方向均勻、可控的聲場覆蓋，主擴的DS5音箱用上了專利中高頻同軸負載相位塞的技術，密封的同軸中/高頻驅動器單元由一個10寸中頻和一個3寸高頻組成，和中高頻同軸負載相位塞、90° x60° 恒定指向性號角耦合在一起。中高頻同軸負載相位塞起到決定性的作用，補償從單元到號角喉口的聲程差，消除中頻驅動器和號角配合後的各部分聲程差和頻響不均勻，從而實現各種場所區域的理想覆蓋。

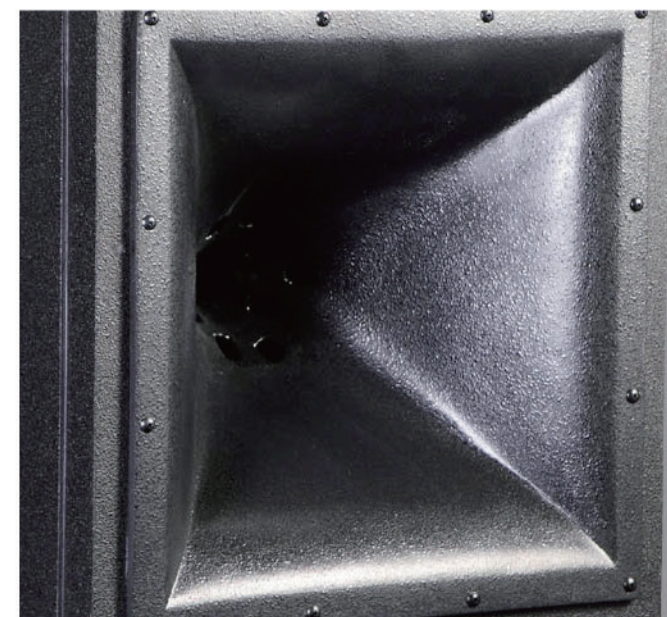
To Make speakers covering the entire region, to achieve sound field uniformed is the necessary consideration of place design. To ensure uniform and controllable sound field coverage in horizontal and vertical direction, DS5 uses patent MF-HF coaxial loading phase plug technology, sealed coaxial MF-HF driving unit is composed by a 10" MF unit and a 3" HF unit, coupling with MF-HF coaxial loading phase plug and 90°x60° constant directing horn. The MF-HF coaxial loading phase plug's crucial function is to compensate the path difference from loudspeaker unit to horn throat and to remove path difference and frequency response asymmetry after MF driver and horn's coupling, in order to get ideal sound field coverage in every place.



## Crossover 分頻器

除了驅動單元本身，分頻網絡對音質的優劣有着舉足輕重的影響。分頻網絡是由點容、電阻、電感等元器件組成，在設計上很難有革命性的突破和改良。但博聲音響的工程師仍不斷努力地去改良優化聲音質量，無源分頻器採用了相鄰頻段之間重疊很少的3階（18dB/倍頻程）斜率濾波器，讓音頻響應曲線更加平直、降低失真和相位幹擾。精細調整的分頻網絡和音箱結合，產生杰出的音質和均勻一致的覆蓋區。

Except driving unit itself, the crossover network has a significant influence on sound quality. Crossover network is composed by capacitor, resistor and inductor; it is hardly to make a revolutionary change for such a design, but BOB's engineers are trying their best to optimize the sound quality. Passive crossover uses 3 level (18dB/octave) slope filter which has little overlap between two adjacent frequency segments. It results a flatter audio response curve, lower distortion and phase interference. Combining with smoothly adjusted crossover network and speaker to make fantastic sound and average covering area.



## Unapproachable Process Detail 無可匹敵的工藝細節

音箱的頂底部設有符合人體工程學的一體化木質把手，底部裝有1個36mm的支撐底座。用於支架安裝，或與其它型號的超低頻音箱連接。頂底部和背板側面板裝有懸吊用的M8吊裝螺絲。

There are ergonomic handles on both sides of the enclosure that ease to delivery, one 36mm supporting base on top for supporting installation and connecting with other models, M8 suspension screw are installed on front side and back side.



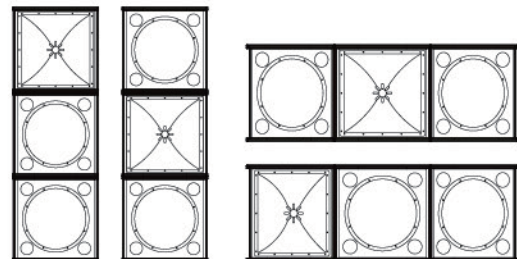
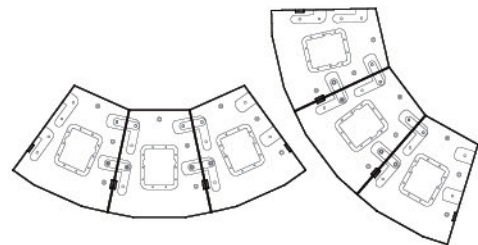


# Varied Assembly Mode

## 百變組合

還在因為房子的大小和高度擔心怎樣懸吊和安裝音箱嗎？這些問題留給我們去幫你解決吧！DS系列就是為了解決這些複雜的問題而設計的，博聲的工程師通過一個系統兩種方案去為你解決問題。首先在音頻結構上完善，我們把整個音頻分成4個頻段，主擴的DS5是全頻帶的音箱，專利的中高频同軸結構實現近乎完美的聲場覆蓋，聲音清晰圓潤。超高設計的DS4主要是為了增強10KHz-20KHz的能量感。為了保證低頻有足够的能量，低頻部分使用了BS215和BS218去配合，通過這兩個型號去增強150Hz-30Hz的頻段，產生激蕩轟鳴、震撼人心的節奏和效果。為了保證整個場所的聲壓均勻，DS1和DS2用作周邊範圍補聲使用。

第二是在組合結構上，把主擴音的DS5設計成模塊化結構，中高频裝在一個和低頻音箱一樣大小的音箱裏，這樣你可以根據你的設計去配套和組合主擴，多達10多種靈活多變的組合擺放方式，既可以在狹小的地方堆疊擺放，也可以在樓層較高的地方吊掛安裝。



Are you still worried about how to suspend and install the speaker beyond the size and height of the house? Please leave this problem to us! DS series is designed for solving complicated problems; BOB's engineer solved the problem for you by two solutions under one system. First of all, we improved the frequency that dividing it into 4 frequency range, full range speaker DS5 is main PA device, patent MF-HF coaxial structure makes smooth sound and perfect sound field coverage. Ultrahigh frequency designed DS4 is major for enhance the energy of 10KHz-20KHz. To ensure enough energy, it can use with BS215 and BS218 for low frequency part to enhance 150Hz-30Hz that making a stocking rhythm and effects. For sound pressure averaged in the whole place, DS1 and DS2 are use for sound reinforce.

Secondly is the structure, the main PA speaker DS5 is modular structure, MF and HF units are installed in the enclosure of the same size as subwoofer. So it can provide over 10 kinds of flexible combining mode according to your design, pileup in a narrow place or suspending on the high place.



## Ultrahigh Unit 超高頻

飄逸靈動的超高頻響應有效增強系統的整體層次感，體型細小，隨意任何地方懸吊，驅動單元由世界知名單元製造公司西班牙BEYMA專門為博聲音響設計和製造，需要外接電子處理器進行分頻。

Elegant ultrahigh frequency response can improve whole layering of the system. BEYMA specially designs and makes this unit for BOB, small size and can be suspended in places, and it needs external processor for frequency divide.

## Installation 安裝配件

DS系列所有型號的音箱都配備了各種吊具和支架，安裝工程師可以根據使用需要選配安裝吊具。

All models of DS series provide kinds of spreader and bracket for installation engineer to choose according to all requirements.

