



LS Series

Column Line Array System
綫性音柱系統

纖之設計 秀之藝術

Slim and nice



技精于博 專注于聲



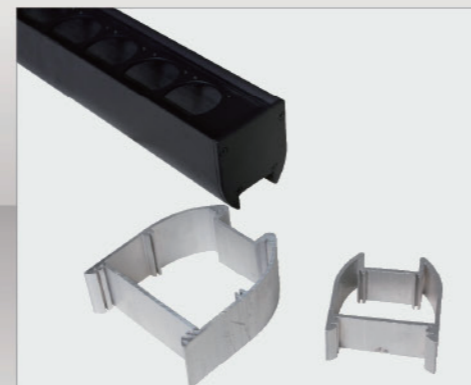
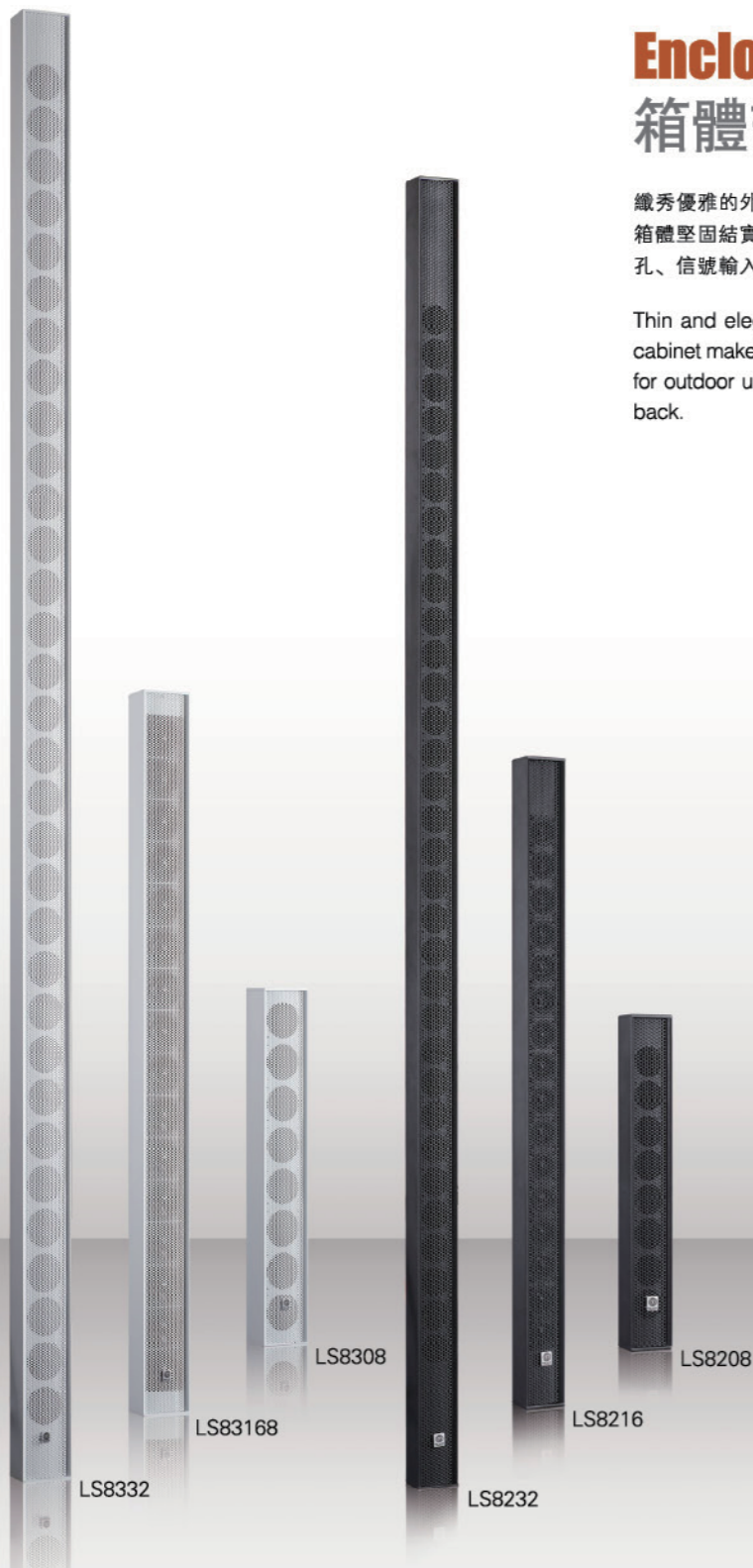
THE BEST OF BEST.....

- LS系列是專為解決許多教堂，博物館以及會議室等大型廳堂擴聲的難題而設計的產品。LS系列共有8個型號，分別是2" 3.5" 6.5" 規格的驅動單元，每個型號的產品都可以級聯，通過多音箱級聯，揚聲器的投射範圍可得到持續的延長，聲壓級顯著提高和擴展觀眾直達聲的頻率範圍。所有型號都可以選擇有源或者無源系統，和PS系列有源低音組合使用，可以變成多用途組合擴聲系統。特別在嘈雜的環境中提供高清晰度和高音質的廣播音頻訊息。
- 纖細勻稱的外觀，時尚的造型，是聲學和美學的完美結合。LS系列標配是黑白兩種顏色，并提供各種顏色給客戶選擇。可以安裝在室內或室外，產品易于安裝，易于設置。
- LS series is designed for churches,museum,and meeting rooms,which is with broadcasting difficulty.there are 8 models,2",3.5",6.5" units,each model can connect to use and extend the shooting distance,increase SPL and frequency of the sound for audience.
- Slightly and symmetry look,fashionable design,is the perfect combination of audio and art.Normally we have white and black colors,you can also choose other colors.Can install indoor or outdoor,easy to install and set.

Enclosure Design 箱體設計

纖秀優雅的外形設計，高品質鋁合金壓鑄箱體，通過強化型的設計使得箱體堅固結實共鳴極低。防水防潮適合戶外安裝，背後集成了支架安裝孔、信號輸入接口、阻抗切換開關。

Thin and elegant design, high quality alu alloy cabinet, the strengthen cabinet make the resonance to be very low. Water and wet proof, suitable for outdoor use, there is bracket hole, signal input, resistant switch in the back.

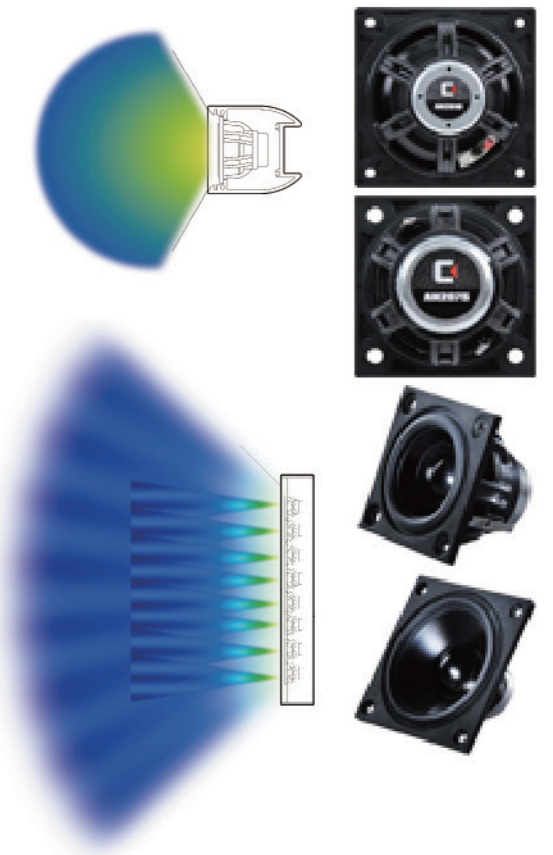


Technology Feature 技術特點

LS系列所有的產品都有共同技術特點，依據線性陣列原理設計，配備了高效率磁鐵驅動單元安裝在垂直線性陣列的箱體裏，這些驅動單元產生一個非常準確的圓柱形的分散體，該圓柱體波形的聲散範圍比傳統揚聲器的聲壓水平保持更恒定的長距離，從而確保良好的聲音分散。正因此，水平120度，垂直15度30度切換，減少不必要的聲音反射到天花板或地板上，從而提高語音清晰度和一致的音頻覆蓋。

All the LS product have same technic features, design according to line array technic, loaded with high quality neo unit in vertical line array cabinet, these units make out an accurate columniform dispersoid which can shoot a longer and firmed distance than traditional

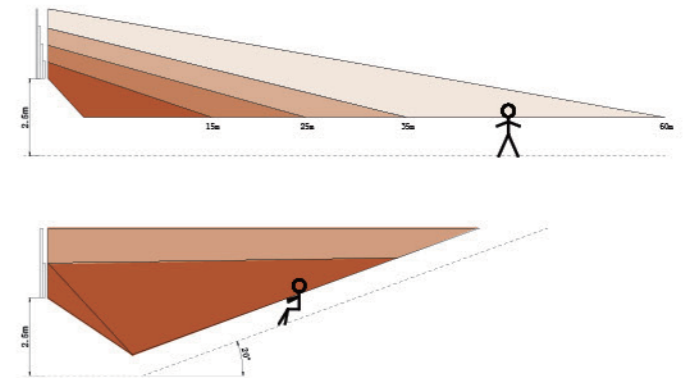
speaker, to make sure a good sound distersion. So horizontal 120 degree, vertical 15 or 30 degree switchable, to reduce unecessary sound reflection to ceiling or floor, to improve definition of sound and the consistency of audio coverage.



Sound Covering Mode 聲音覆蓋模式

LS系列陣列音箱提供了一整套完整的聆聽和安裝模式，以適應任何公共地方的聲音覆蓋。所有投射角度和覆蓋範圍都是通過DSP處理器去調整處理，並不是調整揚聲器的安裝角度。詳細使用請諮詢博聲音響的工程客服。

LS is prepared with a complete listening and installation mode, to meet all public places. All the shooting angle and coverage is adjusted by DSP, but not the installation angle. Please inquiry the customer service clerk of BOB AUDIO.



Application 應用

LS系列提供了兩種不同用途的產品，LS8208、LS8216、LS8232、LS8308、LS83168、LS8332這幾款主要是用在固定的場所安裝方面，同時也可以在戶外作小型的流動演出。LS8652、LS8650主要是用流動或者比較大的場所應用。

LS8208 LS8308 專門針對中小型多媒體教室、酒店、圖書館、咖啡廳等應用。

LS8216 LS8316 專門針對大中小型多媒體教室、酒店宴會廳、音視頻會議室、教堂、體育館、交通設施、購物中心等應用。

LS8232 LS8332 專門針對大型購物廣場、機場、火車站等龐大建築的應用。

LS series contains 2 products based on using LS8208. LS8216. LS8232. LS8308. LS83168. LS8332 mainly used for permanent installaion and outdoor small live show. LS8652. LS8650 mainly used for moving and large places.

LS8208 LS8308 is specially for Mid-small size multi-media room, hotel, library, coffee room.

LS8216 LS8316 is specially large-mid size multi-media room, hotel meeting room, conference room, church, gymnasium, traffic, shopping center.

LS8232 LS8332 is specially for large shopping center, airport, railway station.



Suitable For All The Environment 可與任何環境融合

工業設計的核心就是讓產品能靈活適應任何建築環境，LS系列可以配合客戶根據不同的環境要求定制合適的顏色，將優雅的外形和顏色融合在整體環境布局之中，最重要的是它幾乎是看不見的。

The points of industrial design is to make the prodcuts suits all environment. LS series can be made into differents wanted colors, to combine the look and color together and amalgamation into environment, most important, it's invisible.

Assembly 組合安裝

LS有專屬的鏈接組件，分別是可變角度固定安裝支架的和流動可調角度支架轉換器。這些組件都是只需要幾個簡單動作就可以輕鬆完成安裝。流動轉換支架可以和超低頻音箱的頂部支撐底座連接起來形成各種多用途組合擴聲系統。

There is specified connecting parts for LS series: permanent installing bracket (angle adjustable) and live show switching bracket. All of them just need simple works to finish installing. The live show bracket can use with the subwoofer pole mount to form a speaker system.



Subwoofer 配合LS綫性的超低頻音箱

為了增強LS全頻音箱的低頻能量，博聲音響為LS系列音箱配套了多款超低頻音箱，超低頻音箱和LS系列其他全頻音箱結合使用時，可構成擴展聲音頻譜必需包含的全部聲音特性。適合作為中小型擴聲系統的組成部分，在固定安裝或者流動擴聲等環境中使用。

To increase the LF power of LS series, BOB AUDIO prepare some subwoofer models. Using subwoofer and LS series full range speaker together, can make out all the sound feature. Suitable for mid/large size show, for permanent or live show broadcasting.



Standard using mode 標準的使用模式

每款音箱都有特定的用途，我們為顧客提供的多種使用用途可系統搭配，在圖示上所標示的只是很典型的標準使用方法，主擴我們使用了LS系列的全頻音箱去做語言擴音，在使用音樂廣播的用途時我們建議增加超低頻揚聲器，電子部分我們建議使用DSP去做控制部分，當範圍廣大，可以使用矩陣的DSP處理器去控制每個區域的聲音和聲壓，播放不同的內容。

Every model has its specific function, we provide multi-assembly mode for different using way. The one showed in the figure is just the standard mode, we use LS full range speaker as main broadcasting speaker, when use for music broadcasting, we suggest adding the subwoofer, for electronics we suggest using DSP to control. In large range, you can use the array DSP to control the sound and spl of every district, playing different contents.

